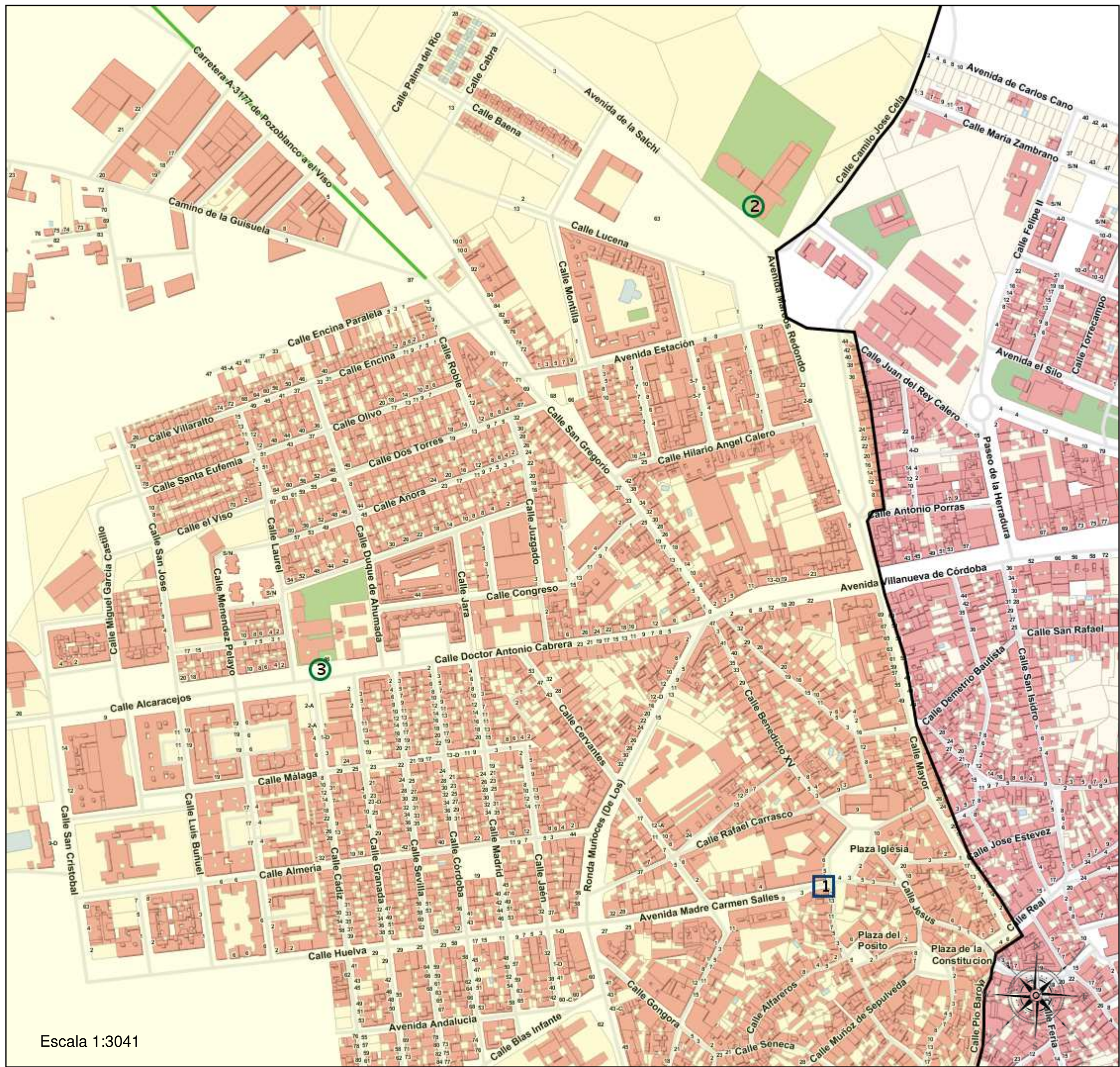
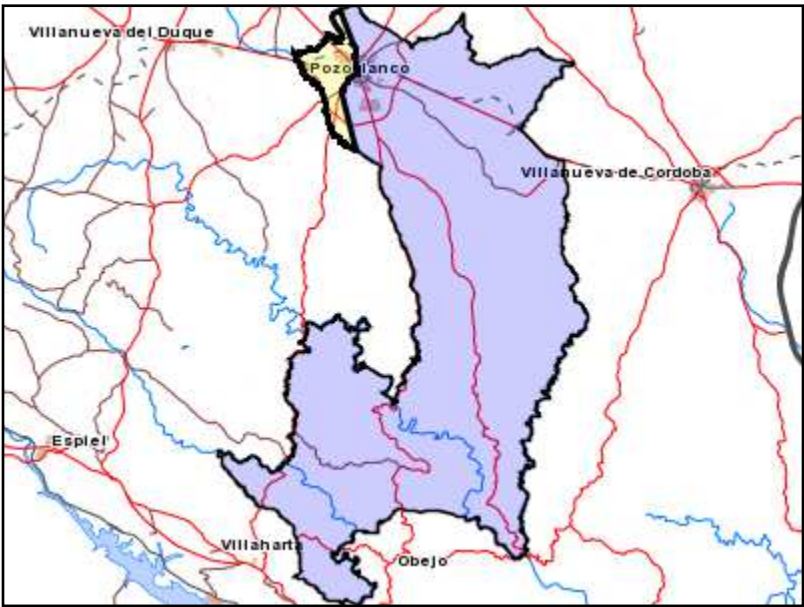


Área de influencia escolar Pozoblanco

Zona Pozoblanco S - Oeste (Secundaria + Bachillerato)

(1) 14005651 - C.D.P. La Inmaculada
 (2) 14005663 - I.E.S. Los Pedroches
 (3) 14700651 - I.E.S. Ricardo Delgado Vizcaíno



Leyenda

- Centros públicos
- Centros concertados

Escala 1:3041



**INFORME DE VIALES DE POZOBLANCO
ÁREA DE INFLUENCIA Pozoblanco S - Oeste**

Centros del área:

14005651 - C.D.P. La Inmaculada

14005663 - I.E.S. Los Pedroches

14700651 - I.E.S. Ricardo Delgado Vizcaíno

Viales incluidos en el área:

Nombre de vía	Rango de portales
AVENIDA ANDALUCIA	1, 60, 62
AVENIDA ARGENTINA	3, 4, 5, 6, 8, 9, 14, 15, 16, 17, 18, 19, 20, 21, 22, 23, 24, 25, 26, 27, 28, 32
AVENIDA DE LA SALCHI	3, 999
AVENIDA ESTACION	1, 2, 3, 4, 5, 6, 7, 8, 9, 10, 12
AVENIDA MARCOS REDONDO	1, 2, 5, 8, 10, 12, 14, 15, 16, 20, 22, 23, 24, 26, 27, 28, 29, 30, 31, 32, 33, 34, 36, 38, 40, 42, 44
AVENIDA VILLANUEVA DE CORDOBA	2, 3, 5, 6, 7, 8, 10, 11, 12, 13, 14, 16, 17, 18, 19, 20, 21, 22, 23, 28, 31
CALLE ADOLFO DE TORRES	1, 3, 5, 7
CALLE AGUSTIN MARQUEZ	1, 3, 5, 7, 9, 11, 13
CALLE ALCARACEJOS	2, 4, 6, 8, 9, 10, 12, 14, 16, 18, 20, 26
CALLE ALFAREROS	2, 3, 4, 5, 7, 8, 10, 12, 13, 14, 15, 16, 17, 19, 20, 21, 22, 24, 25, 26, 28
CALLE ALMERIA	2, 3, 4, 5, 6, 7, 8, 9, 10, 11, 12, 13, 14, 16, 18, 19, 20, 21, 22, 24, 26, 32, 33, 34, 35, 37, 39, 40, 42, 44
CALLE ANCHA	1, 2, 3, 4, 5, 6, 8, 9, 10, 11, 12, 13, 14, 16, 18, 22, 24, 26
CALLE ANGEL	13, 15
CALLE ANTONIO MACHADO	17
CALLE AÑORA	1, 2, 3, 4, 5, 6, 7, 8, 9, 10, 11, 12, 14, 16, 17, 18, 20, 21, 22, 23, 24, 25, 26, 27, 28, 29, 30, 32, 33, 34, 35, 36, 37, 38, 39, 40, 41, 42, 43, 44, 45, 46, 47, 48, 49, 50, 51, 52, 53, 54, 55, 56, 57, 58, 59, 60, 62
CALLE AYUNTAMIENTO	1, 2, 3
CALLE BAENA	1, 2, 13, 25
CALLE BELGICA	14
CALLE BENEDICTO XV	1, 3, 4, 5, 8, 10, 11, 12, 13, 14, 16, 17, 19, 20, 21, 22, 23, 24, 25, 26, 27, 28, 29, 30, 31, 32, 33, 34, 35, 36, 37, 38, 39, 40, 41, 42, 44, 46
CALLE BLAS INFANTE	21
CALLE CABRA	13, 17, 21, 25, 29
CALLE CADIZ	1, 3, 5, 7, 8, 9, 10, 12, 13, 14, 15, 16, 17, 18, 19, 20, 21, 22, 23, 24, 25, 26, 27, 28, 29, 30, 31, 32, 33, 34, 35, 36, 37, 38, 39, 40, 41, 43, 44, 45, 46, 47, 48, 49, 50, 51, 52, 53, 54, 55, 56, 57, 58, 59, 60, 61, 62, 63, 76, 78, 80, 84, 86, 88, 90
CALLE CAMILO JOSE CELA	2, 4, 6
CALLE CELESTINO MARTINEZ	3, 4, 6, 8, 9, 10, 12, 14, 16
CALLE CERVANTES	2, 5, 6, 7, 8, 9, 10, 11, 12, 13, 14, 15, 16, 17, 18, 19, 20, 22, 24, 25, 26, 27, 28, 29, 30, 31, 32, 33, 35, 37, 39, 41, 43, 45, 47, 49, 51, 53, 55
CALLE CLARA CAMPOAMOR	2, 4, 6
CALLE CONCEPCION	1, 3, 4, 5, 6, 7, 8, 9, 11, 12, 13, 14, 15, 16, 17
CALLE CONGRESO	1, 2, 4, 7, 9, 11, 13, 15, 44
CALLE CORDOBA	1, 2, 3, 4, 5, 6, 7, 8, 9, 10, 11, 12, 13, 14, 15, 16, 17, 18, 19, 20, 21, 22, 23, 24, 25, 27, 28, 29, 30, 31, 32, 34, 36, 37, 38, 39, 41, 42, 43, 44, 45, 46, 47, 48, 49, 50, 51, 52, 53, 54, 56, 57, 58, 61, 62, 64, 66, 68, 70, 72, 74, 76
CALLE CRISTOBAL COLON	1, 3, 5, 7
CALLE DOCTOR ANTONIO CABRERA	1, 5, 6, 7, 8, 9, 11, 12, 13, 14, 15, 16, 17, 18, 19, 20, 21, 22, 23, 24, 25, 26, 27, 28, 29, 31, 32, 33, 34, 35, 37, 38, 39, 41, 46
CALLE DOCTOR FLEMING	1, 2, 3, 8, 10
CALLE DOCTOR RODRIGUEZ BLANCO	1, 2, 3, 4, 5, 6, 7, 8, 10, 11, 12, 13, 14, 15, 16, 17, 18, 19, 20, 21, 22, 26, 28, 30, 32, 34
CALLE DOCTOR VICENTE PEREZ	0, 1
CALLE DOS TORRES	4, 5, 6, 7, 8, 9, 10, 11, 12, 13, 14, 15, 16, 17, 18, 19, 20, 21, 22, 24, 26, 28, 29, 30, 31, 32, 34, 36, 38, 40, 41, 42, 44, 46, 48, 49, 50, 51, 52, 53, 54, 55, 56, 57, 58, 59, 60, 61, 62, 63, 64, 67
CALLE DUQUE DE AHUMADA	3, 8

**INFORME DE VIALES DE POZOBLANCO
ÁREA DE INFLUENCIA Pozoblanco S - Oeste**

Nombre de vía	Rango de portales
CALLE ENCINA	1, 2, 5, 6, 7, 8, 9, 10, 11, 12, 13, 14, 16, 17, 18, 19, 20, 21, 22, 23, 24, 25, 26, 27, 28, 29, 30, 31, 32, 33, 34, 35, 36, 37, 38, 39, 40, 41, 42, 43, 44, 45, 46, 47, 49, 51
CALLE ENCINA PARALELA	1, 3, 5, 7, 9, 11, 13, 15, 17, 19, 21, 23, 25, 27, 29, 31, 33, 35, 37, 39, 41, 43, 45, 47
CALLE FEDERICO GARCIA LORCA	19
CALLE FOMENTO	1, 3, 4, 5, 6, 7, 8, 9, 10, 11, 12, 14, 15, 16, 17, 27
CALLE FRANCIA	1, 6, 8, 10, 16, 20
CALLE FRANCISCO REDONDO GUILLEN	2, 4
CALLE GONGORA	2, 3, 5, 8, 11, 13, 15, 16
CALLE GRANADA	2, 3, 4, 5, 6, 7, 8, 9, 10, 11, 12, 13, 14, 15, 16, 18, 19, 21, 22, 23, 24, 25, 26, 27, 28, 29, 30, 31, 32, 34, 35, 36, 37, 38, 39, 41, 42, 43, 45, 46, 47, 48, 49, 50, 51, 53, 55, 56, 58, 62, 65, 69, 71, 73, 75, 77, 79
CALLE GUSTAVO ADOLFO BECQUER	2, 4, 6
CALLE HILARIO ANGEL CALERO	1, 2, 3, 4, 8, 10, 11, 12, 14, 16, 17, 21, 23, 25
CALLE HUELVA	0, 2, 3, 5, 6, 7, 9, 11, 12, 13, 14, 15, 16, 17, 18, 23, 25, 27, 29, 41, 57, 58
CALLE ITALIA	11, 13, 15, 17, 19
CALLE JAEN	1, 2, 3, 4, 5, 6, 7, 8, 9, 10, 11, 12, 13, 14, 15, 17, 18, 20, 22, 23, 24, 25, 26, 27, 28, 29, 30, 31, 32, 33, 34, 35, 36, 37, 38, 40, 41, 42, 60
CALLE JESUS	1, 2, 3, 4, 6, 7, 8, 9, 11, 12, 14
CALLE JUAN RAMON JIMENEZ	2, 4, 5, 6, 7, 8, 9, 10, 11, 12, 14, 16, 17, 18, 20
CALLE JUZGADO	1, 2, 3, 6, 8, 10, 12, 14, 16, 18, 20, 22, 24, 26, 28, 30, 32
CALLE LAUREL	3, 9, 11, 12, 13, 15, 48, 50, 51
CALLE LEON HERRERO	1, 3, 4, 5, 6, 7, 8, 9, 10, 11, 13, 18, 21, 22, 23, 24, 26, 28, 29
CALLE LIBERTAD	2, 3, 5, 8
CALLE LUCENA	1, 2, 3, 9, 13, 28, 63
CALLE LUIS BUÑUEL	1, 3, 17, 19
CALLE MADRID	1, 2, 3, 4, 5, 6, 7, 8, 10, 11, 12, 13, 14, 15, 16, 18, 19, 20, 21, 23, 24, 25, 26, 27, 28, 29, 30, 31, 32, 33, 34, 35, 39, 40, 41, 42, 43, 44, 45, 46, 47, 48, 49, 50, 51, 52, 53, 54, 57, 58, 59, 63, 65
CALLE MAESTRO DON CAMILO	1, 29
CALLE MAESTRO JOSE MARQUEZ RANCHAL	1, 2, 5, 7, 8
CALLE MALAGA	1, 2, 3, 4, 6, 8, 9, 11, 13, 15, 17, 19, 21, 23, 24, 25, 27, 29, 31
CALLE MANUEL LUNA RIVERA	2, 3, 4, 5, 6, 8
CALLE MARTA PERALBO	1, 3, 4, 5, 6, 7, 8, 9, 10, 12
CALLE MAYOR	1, 2, 3, 4, 5, 7, 9, 10, 11, 13, 14, 16, 17, 18, 20, 24, 26, 28, 30, 31, 32, 33, 34, 35, 36, 37, 39, 40, 43, 44, 45, 46, 48, 49, 52, 53, 55, 56, 57, 58, 59, 60, 61, 62, 63, 65, 67, 69
CALLE MEDIODIA	1, 3, 5, 7, 8, 9, 10, 11, 12, 13, 14, 15, 16, 17, 18, 20, 21, 22, 23, 24, 25, 26, 27, 28, 29
CALLE MENENDEZ PELAYO	0, 1, 2, 3, 4, 6
CALLE MIGUEL GARCIA CASTILLO	3, 6
CALLE MONTILLA	1
CALLE MUÑOZ DE SEPULVEDA	1, 3, 4, 5, 6, 8, 9, 10, 11, 12, 13, 14, 15, 16, 17, 18, 20, 21, 22, 24, 25, 26, 27, 28, 29, 30, 31, 32, 33, 34, 35, 36, 37, 38, 39, 40, 41, 42, 46, 47, 48, 49, 50, 52, 54, 55, 61, 64, 67, 68, 69, 70, 71, 72, 73, 74, 75, 76, 77, 78, 81, 82, 83, 84, 85, 87, 88, 89, 90, 91, 92, 93, 94, 97, 100, 102, 104, 106, 108, 110, 112, 114
CALLE NUESTRA SEÑORA DE LA ESPERANZA	2, 4, 8, 10, 12, 14, 16, 18, 20, 22, 24, 26, 28, 30, 32, 34, 36, 38, 42, 44, 46, 48, 50, 52, 54
CALLE OLIVO	1, 2, 3, 4, 5, 6, 7, 8, 9, 10, 11, 12, 13, 14, 15, 16, 17, 18, 19, 20, 21, 22, 23, 24, 25, 27, 28, 30, 31, 32, 33, 34, 35, 36, 37, 38, 39, 40, 41, 42, 43, 44, 45, 46, 51
CALLE PADRE TARIN	1, 3, 4, 5, 6, 7, 9, 11, 13
CALLE PALMA DEL RIO	12, 16, 20, 24, 28, 999
CALLE PIO BAROJA	3, 5, 8, 10, 14, 17
CALLE PORTUGAL	1, 11, 13, 15, 17, 19, 21, 23
CALLE PRIEGO DE CORDOBA	1
CALLE RAFAEL ALBERTI	11
CALLE RAFAEL CARRASCO	9
CALLE REAL	2, 4, 6

**INFORME DE VIALES DE POZOBLANCO
ÁREA DE INFLUENCIA Pozoblanco S - Oeste**

Nombre de vía	Rango de portales
CALLE REFERENDUM	21
CALLE ROBLE	7, 9, 11, 13, 15
CALLE SAN CAYETANO	1, 3, 5, 13, 15, 16, 17, 18, 20
CALLE SAN CRISTOBAL	2, 4, 10, 11, 12, 14, 63
CALLE SAN GREGORIO	1, 2, 3, 5, 6, 7, 8, 9, 10, 11, 12, 13, 14, 15, 16, 17, 18, 19, 25, 26, 28, 30, 31, 32, 33, 34, 35, 36, 37, 38, 39, 40, 41, 42, 43, 44, 46, 47, 48, 49, 51, 52, 53, 54, 55, 56, 57, 58, 60, 61, 62, 63, 64, 65, 66, 67, 68, 69, 70, 71, 72, 74, 76, 77, 80, 81, 82, 84, 92, 100
CALLE SAN IGNACIO DE LOYOLA	1, 2, 3, 4, 6, 8, 9, 10, 11, 12, 13, 14, 15, 16, 18, 20, 21, 23, 25
CALLE SAN JOSE	1, 4, 5, 7, 8, 9, 10, 11, 12, 13
CALLE SANTA CATALINA	3, 4, 6, 7, 8, 9, 11, 12, 13, 15, 17, 19, 20, 23, 24, 25, 26, 30, 31, 37
CALLE SANTA EUFEMIA	1, 5, 7, 52, 54, 56, 57, 58, 60, 61, 62, 63, 64, 65, 66, 67, 68, 69, 70, 72, 73, 74, 75, 76, 77, 78, 79
CALLE SANTA LUCIA	2, 4, 6, 7, 8, 9, 10, 11, 14, 15, 16, 17, 19, 20, 21, 25, 27, 28, 29, 30, 31, 32, 33, 34, 35, 37, 38, 39, 40, 41, 42, 43
CALLE SENECA	4, 7, 9, 11, 12, 13, 15, 18, 19, 21, 30
CALLE SEVILLA	1, 2, 3, 4, 5, 6, 7, 8, 9, 10, 11, 12, 13, 14, 15, 16, 17, 18, 19, 20, 21, 22, 24, 25, 27, 28, 29, 30, 31, 32, 33, 34, 35, 36, 38, 39, 40, 41, 43, 45, 46, 47, 48, 49, 50, 51, 52, 53, 54, 56, 58, 59, 60, 61, 62, 63, 64, 65, 66, 67, 68, 69, 71, 73, 74, 75, 76, 77, 78, 80, 82, 84, 86
CALLE URSULA MUÑOZ	1, 2, 7, 8
CALLE VICENTE ALEIXANDRE	1
CALLE VILLANUEVA DEL DUQUE	1, 2, 3, 4, 5, 6, 7, 8, 9, 10, 11, 13, 15, 17, 19
CALLE VILLARALTO	26, 50, 52, 53, 54, 55, 56, 57, 58, 59, 60, 61, 62, 63, 64, 65, 66, 68, 69, 70, 71, 72, 74, 76, 78, 79, 80, 82, 84, 86, 88, 90, 92, 94, 96, 98, 102
CALLE VISO (EL)	2, 68, 70, 72, 74, 76, 78, 80, 82, 84, 86, 88, 90, 92
CAMINO GUISUELA (DE LA)	0, 1, 3, 8, 20, 87
CARRETERA ALCARACEJOS	1, 2, 3, 4, 5, 6, 8, 9, 10, 11, 13, 15, 17, 19, 21, 57
CARRETERA A-3177 DE POZOBLANCO A EL VISO	5, 6, 7, 9, 10
LUGAR GUISUELA (LA)	23, 24, 25, 26, 27, 28, 30, 31, 32, 33, 34, 35, 36, 37, 38, 39, 40, 41, 44, 45, 46, 47, 48, 49, 50, 51, 52, 53, 55, 56, 57, 59, 60, 61, 62, 63, 64, 65, 66, 67, 68, 69, 70, 72, 73, 74, 75, 76, 82, 83
PLAZA CONSTITUCION (DE LA)	1, 2
PLAZA IGLESIA	1, 2, 4, 6, 10
PLAZA POSITO (DEL)	4, 7, 9
POLIGONO INDUSTRIAL SAN GREGORIO	11, 12, 13, 14, 15, 17, 18, 19, 21, 22, 79
RONDA MUÑOCE (DE LOS)	2, 5, 8, 9, 10, 11, 12, 13, 15, 16, 20, 21, 22, 23, 24, 25, 26, 27, 28, 29, 36, 38, 40, 41, 42, 43, 45, 46, 47, 48, 49, 50, 51, 52, 53, 54, 55, 56, 57, 59, 61, 62, 63, 64, 65, 66, 67
TRAVESIA CERVANTES	1, 2, 3
TRAVESIA MUÑOZ DE SEPULVEDA	4, 56, 58
VEREDA VILLANUEVA DEL DUQUE (DE)	9

Áreas limítrofes:

Área de influencia	Centros del área
Pozoblanco S - Este	14005641 - C.D.P. San José Plaza Padres Salesianos, 7 14007684 - I.E.S. Antonio María Calero Avenida Marcos Redondo, s/n